



Cable ID: UTPCAT5E

Test Summary: PASS

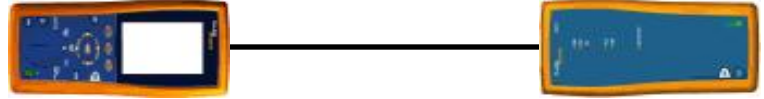
Date / Time: 06/08/2019 04:26:57pm
Headroom: 16.7 dB (NEXT 12-36)
Test Limit: TIA Cat 5e Channel
 Cable Type: Cat 5e UTP

Operator: Your Name
 Software Version: 2.7400
 Limits Version: 1.9300
 NVP: 69.0%

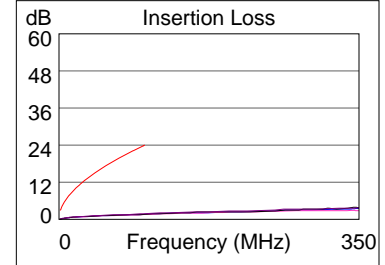
Model: DTX-1800
 Main S/N: 2063037
 Remote S/N: 2063036
 Main Adapter: DTX-CHA002
 Remote Adapter: DTX-CHA002

Wire Map (T568B)

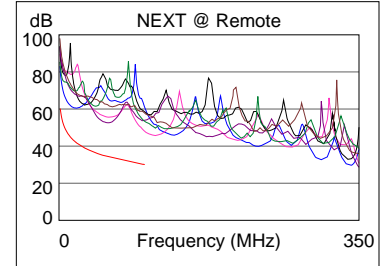
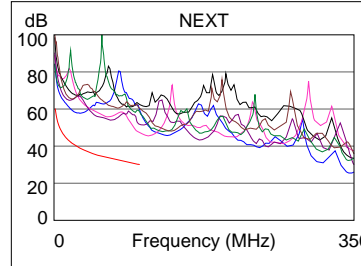
PASS



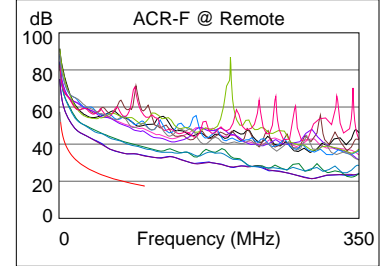
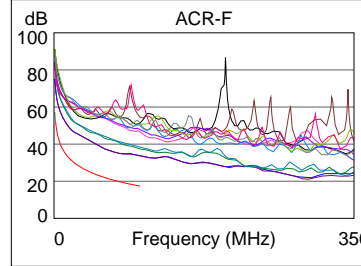
Length (ft), Limit 328	[Pair 45]	16
Prop. Delay (ns), Limit 555		24
Delay Skew (ns), Limit 50		1
Resistance (ohms)	[Pair 36]	2.4
Insertion Loss Margin (dB)	[Pair 78]	22.1
Frequency (MHz)	[Pair 78]	100.0
Limit (dB)	[Pair 78]	24.0



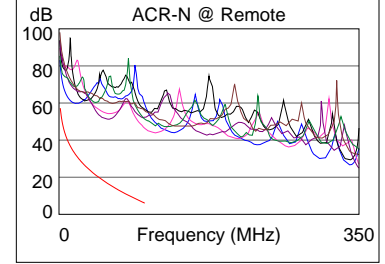
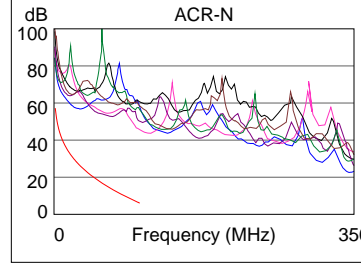
	Worst Case Margin		Worst Case Value	
	MAIN	SR	MAIN	SR
PASS				
Worst Pair	12-45	12-36	12-45	12-45
NEXT (dB)	17.2	16.7	17.2	17.9
Freq. (MHz)	100.0	8.9	100.0	99.8
Limit (dB)	30.1	47.9	30.1	30.1
Worst Pair	36	36	45	45
PS NEXT (dB)	18.5	18.8	18.7	19.6
Freq. (MHz)	7.0	11.4	100.0	99.8
Limit (dB)	46.6	43.1	27.1	27.1



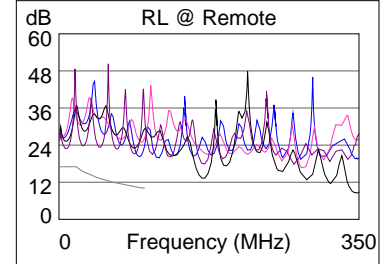
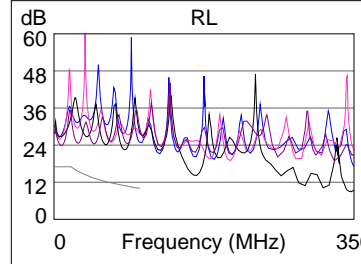
	Worst Case Margin		Worst Case Value	
	MAIN	SR	MAIN	SR
PASS				
Worst Pair	36-12	12-36	36-12	36-12
ACR-F (dB)	15.1	15.1	16.1	16.1
Freq. (MHz)	61.3	64.5	99.3	99.3
Limit (dB)	21.7	21.2	17.5	17.5
Worst Pair	36	36	36	36
PS ACR-F (dB)	17.3	17.1	17.9	17.6
Freq. (MHz)	71.0	59.8	99.3	99.3
Limit (dB)	17.4	18.9	14.5	14.5



	Worst Case Margin		Worst Case Value	
	MAIN	SR	MAIN	SR
N/A				
Worst Pair	12-36	12-36	12-45	12-45
ACR-N (dB)	22.7	21.9	39.6	40.3
Freq. (MHz)	3.8	2.0	100.0	99.8
Limit (dB)	49.7	55.3	6.1	6.1
Worst Pair	36	36	45	45
PS ACR-N (dB)	22.9	22.9	41.1	42.0
Freq. (MHz)	2.0	2.0	100.0	99.8
Limit (dB)	52.3	52.3	3.1	3.1



	Worst Case Margin		Worst Case Value	
	MAIN	SR	MAIN	SR
N/A				
Worst Pair	78	78	45	12
RL (dB)	6.9	5.9	11.6	9.9
Freq. (MHz)	7.6	7.8	82.5	93.5
Limit (dB)	17.0	17.0	10.8	10.3



Compliant Network Standards:
 10BASE-T 100BASE-TX 100BASE-T4
 1000BASE-T ATM-25 ATM-51
 ATM-155 100VG-AnyLan TR-4
 TR-16 Active TR-16 Passive